



WEEKLY CONSTRUCTION UPDATE

Project Title: Whitman 20-Inch Force Main Replacement CWSRF - 6885		Report #: EP - 09-09-2022
Project Location: Brockton, MA and Whitman, MA	From: 9/05/2022	Week: 21
Client: Whitman, MA	To: 9/09/2022	Engineer Project #: 279-1901
On-Site Engineer: Bob Fitzgerald, Environmental Partners	Contact: (508) 776-7556	
Contractor: C. Naughton Corp.		

CONSTRUCTION ACTIVITIES COMPLETED THIS WEEK:

1. C. Naughton did not perform work on Monday, 9/05 or Tuesday, 9/06 due to the Labor Day holiday and poor weather conditions. C. Naughton resumed work on Wednesday, 9/07.
2. C. Naughton had one crew continuing the installation of the 12" DI water main on Auburn Street. C. Naughton installed approximately 700 LF of the new 12-inch DI water main and associated water main gate valves on Auburn Street. Approximately 75% of the water main is complete on Auburn Street.
3. C. Naughton had a second crew continuing the installation of water service laterals on Auburn Street. C. Naughton installed approximately 115 LF of the new 1-inch PE tubing and associated service taps on Auburn Street.
4. C. Naughton detoured traffic onto Beaver Street and Alger Street while the sewer main work was on-going this week. A copy of the detour plan is attached for reference.
5. C. Naughton will continue installing the 12" DI water main on Auburn Street on Friday, 9/9. All trenches were backfilled, compacted, and paved prior to leaving for the weekend.

WEEK LOOK-AHEAD SCHEDULE:

1. C. Naughton will have two crews on site next week (week of 09/12/2022) to continue installation of both the 20-inch HDPE sewer force main in the cross-country easement in Brockton and the 12-inch DI water main on Auburn Street in Whitman.

2. C. Naughton will have their drilling subcontractor (Henniker Directional Drilling) on-site on to install the 20-inch HDPE sewer force main via directional drilling in the cross-country easement next week (week of 9/12/2022).
3. C. Naughton is maintaining alternating single laned traffic on Auburn Street while water and sewer work is on-going. C. Naughton will maintain access for local residents and for emergency vehicles while the detour is on-going.
4. Daily traffic updates to the Town's project website will be posted to alert residents of anticipated road closures and detours.

PROJECT PHOTOS



Photo 1: Staging of 20-inch HDPE Sewer Force Main in Cross Country Easement

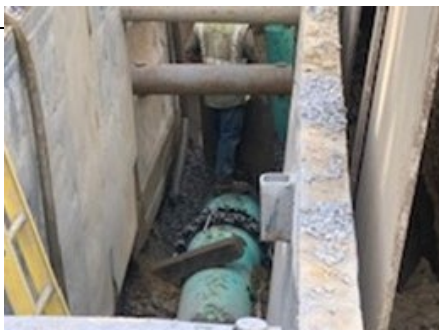




Photo 2: Installation of the 20-inch PVC Sewer Force Main with Restrained Joints on Auburn Street

Photo 3: Exposed Gas Main along the 12-inch Water Main Alignment

Prepared By: Amanda Shanahan, Project Engineer, Environmental Partners Group, LLC

Reviewed By: Andrew Grota, Project Manager, Environmental Partners Group, LLC